

NATIONAL DEPARTMENT OF HEALTH
HEALTH FACILITIES STANDARDS BRANCH
P.O. BOX 807
MARGAN, N.C.D
PAPUA NEW GUINEA
TELEPHONE NO. 3251066 FAX NO. 3250279

DRAWN BY	NPosanal
DATE DRAWN	22/01/13
DESIGNED BY	NPosanal
DEVELOPED BY	NPosanal
CHECKED BY	JMorra
SCALE	1:100
CAD FILE	CAD-FILE

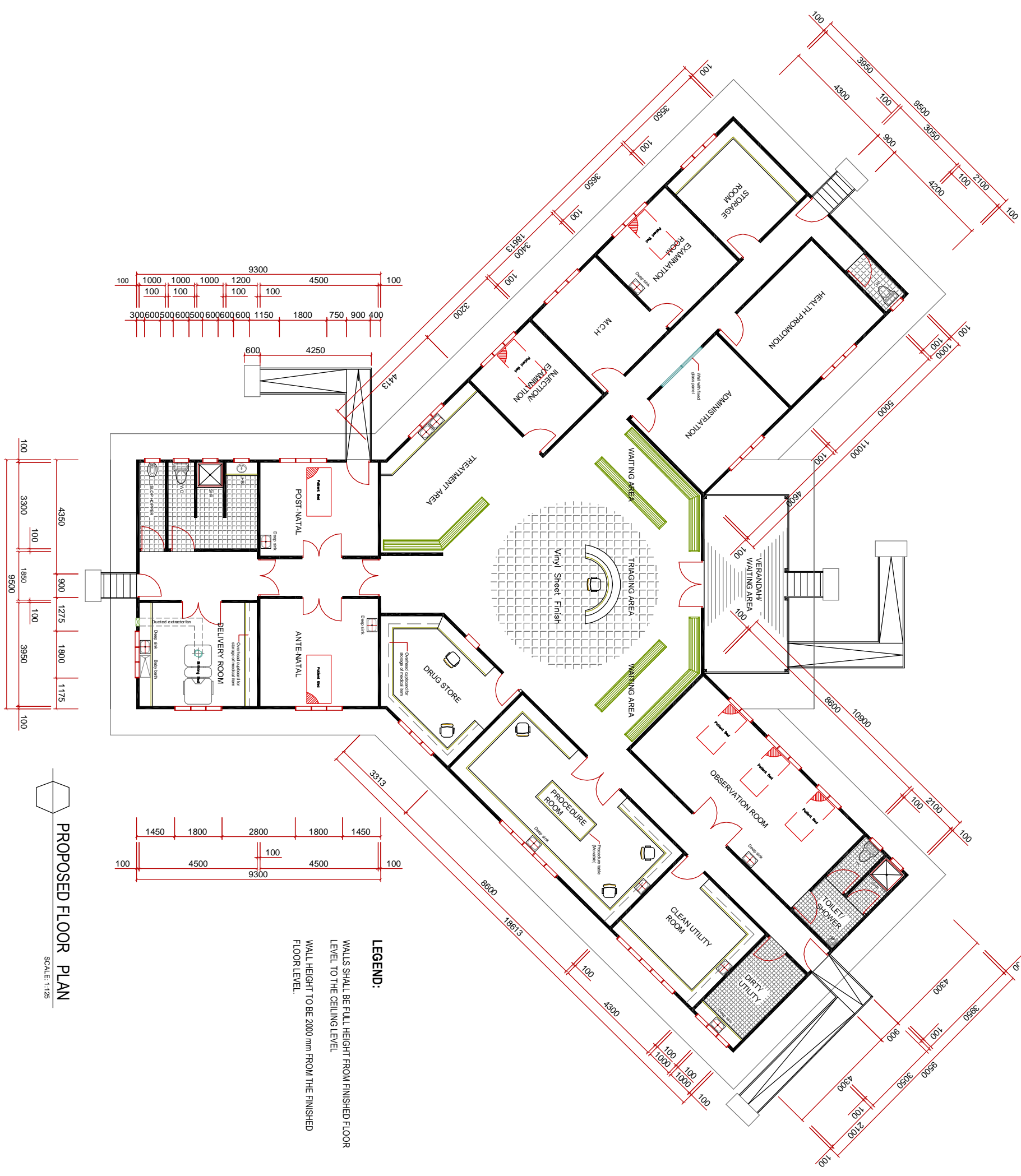
PROJECT:

COMMUNITY HEALTH POST.

DWG. TITLE:
**STANDARD FLOOR PLAN
DRAWING OPTION (THREE) 3**

MARK	DATE	REVISION
		Revised by Nicholas Posanal on 26/01/13

ISSUED FOR	STANDARD DESIGN
DWG. NO.	
SHT NO.	03 OF 04
PSIZE	A3
REV. NO.	A
APPD. DATE	
REF. DWG.	



PROPOSED FLOOR PLAN
SCALE: 1:125

LEGEND:
 WALLS SHALL BE FULL HEIGHT FROM FINISHED FLOOR LEVEL TO THE CEILING LEVEL
 WALL HEIGHT TO BE 2000 mm FROM THE FINISHED FLOOR LEVEL.